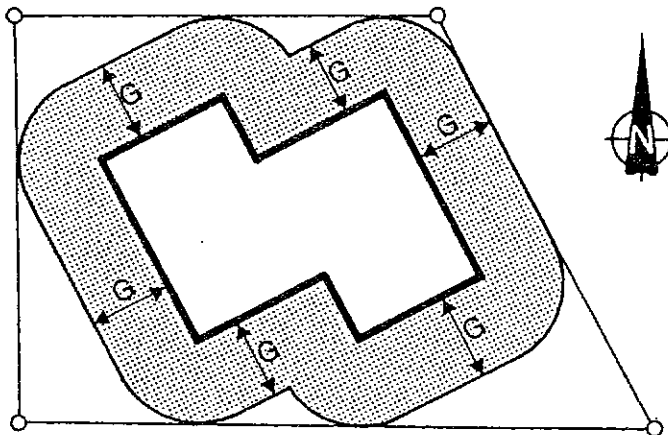
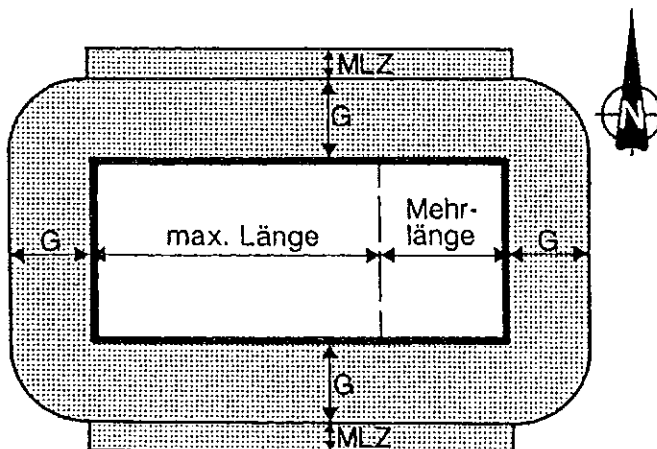


G = Grenzabstand



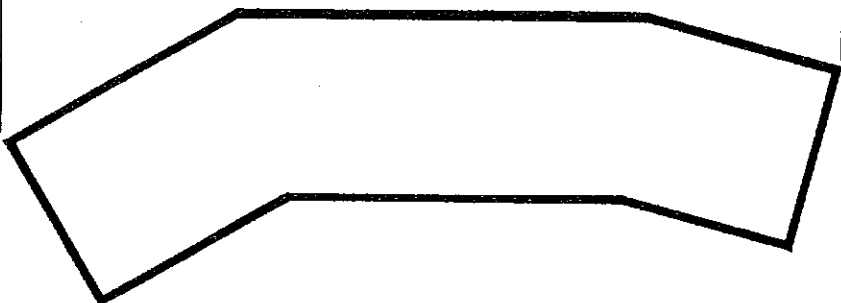
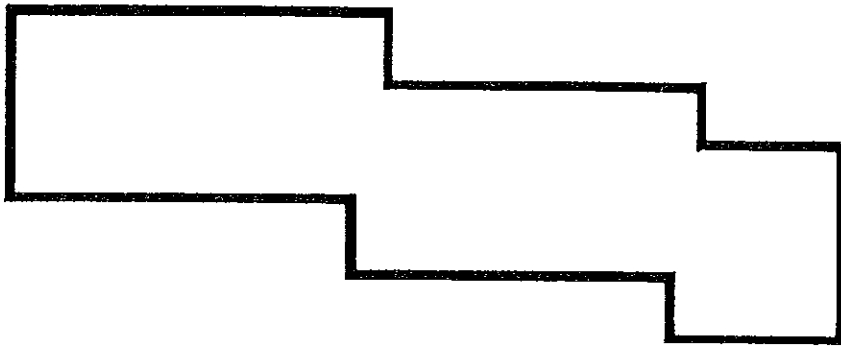
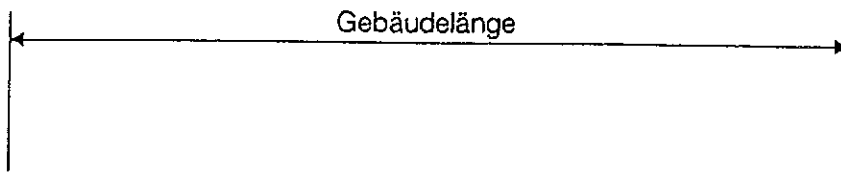
G = Grenzabstand



MEHRLÄNGENZUSCHLAG ART. 32

G = Grenzabstand

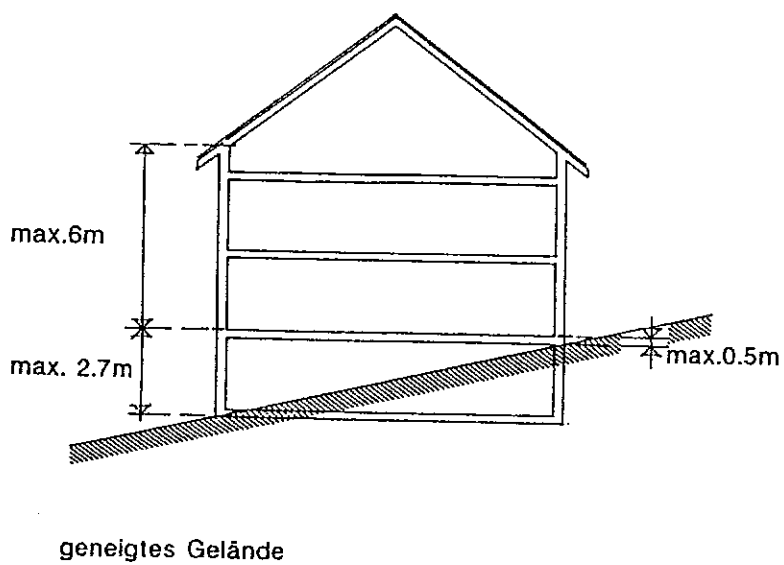
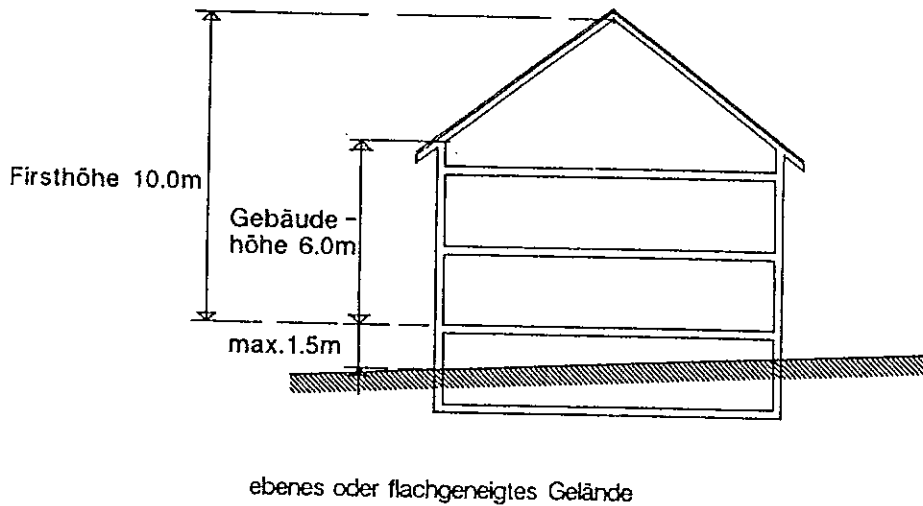
$$MLZ = \text{Mehrlängenzuschlag} = \frac{\text{Mehr-länge}}{3}$$



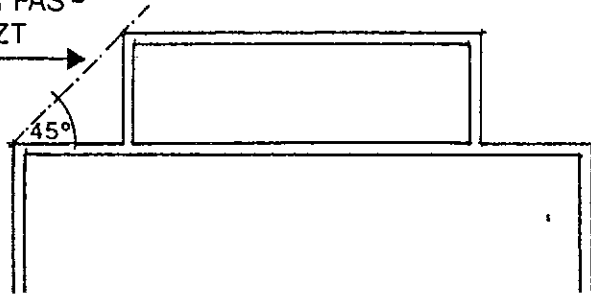
GEBÄUDEHÖHE UND FIRSHÖHE (ART. 43 + 44) HÖHENLAGE DER GEBÄUDE ⁵⁷

Beispiel : 2-geschossige Zone

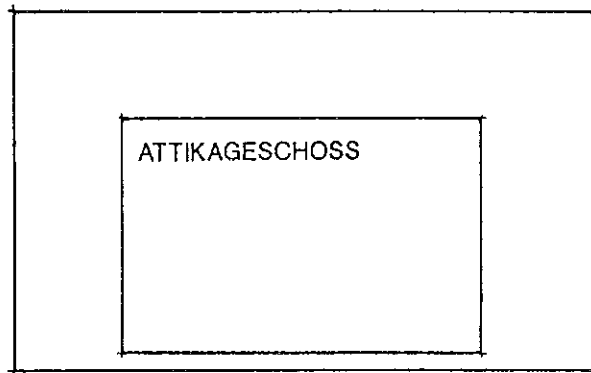
Art. 38 BZO



AUF MIND. DREI SEITEN DES
GEBÄUDES VON DER FAS-
SADE RÜCKVERSETZT



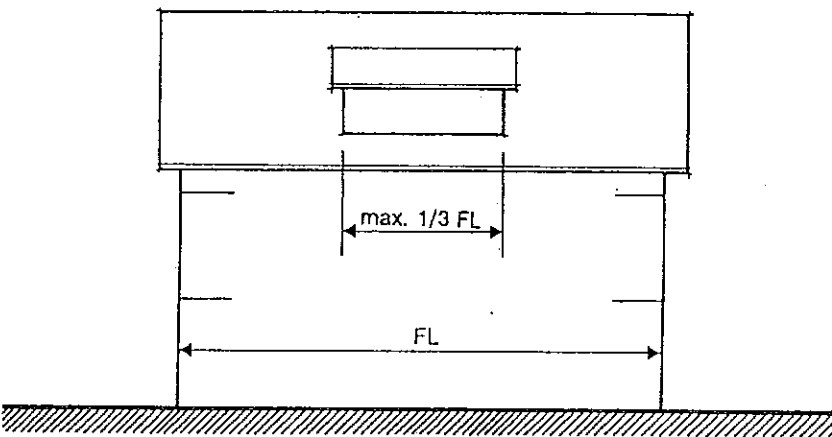
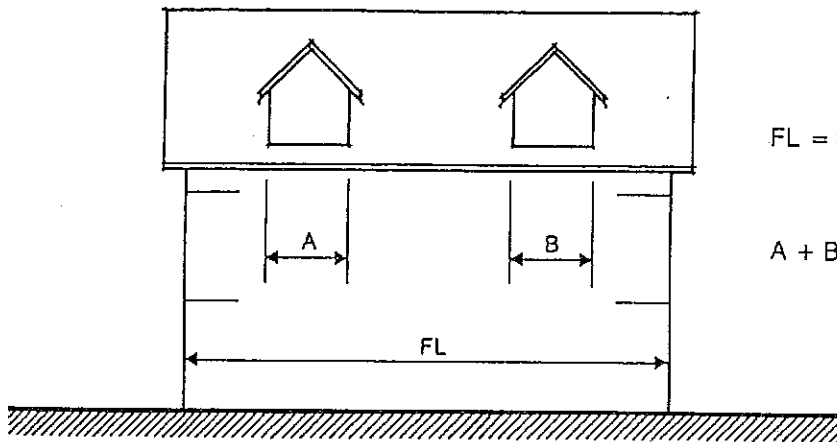
SCHNITT



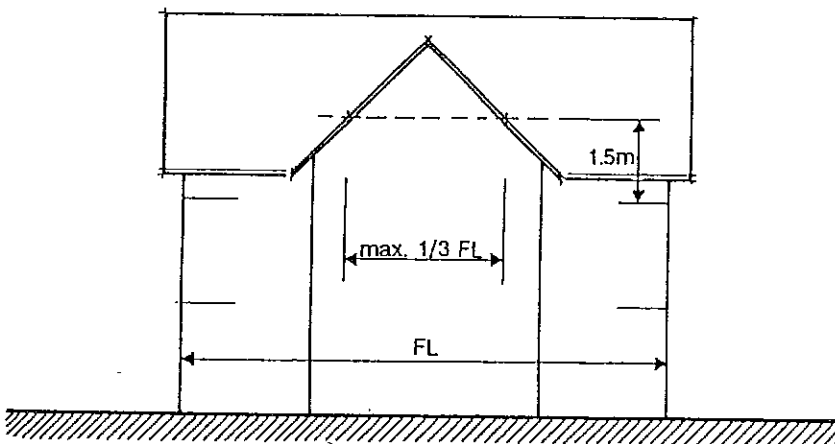
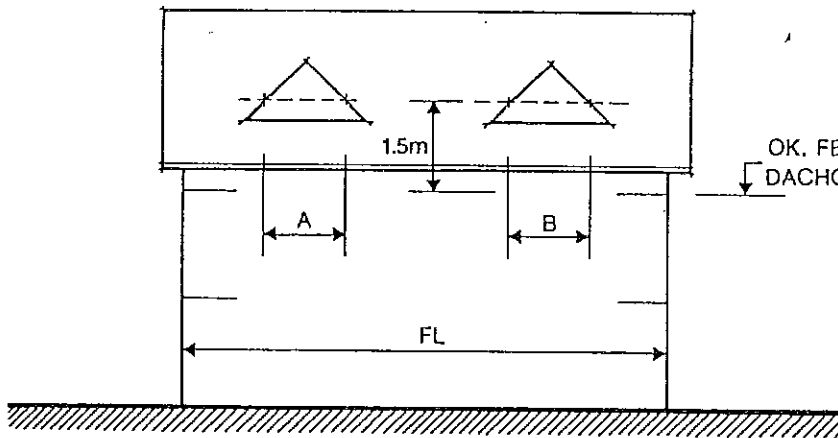
GRUNDRISS VOLLGESCHOSS

FL = FASSADENLÄNGE

$A + B = \max. 1/3 FL$

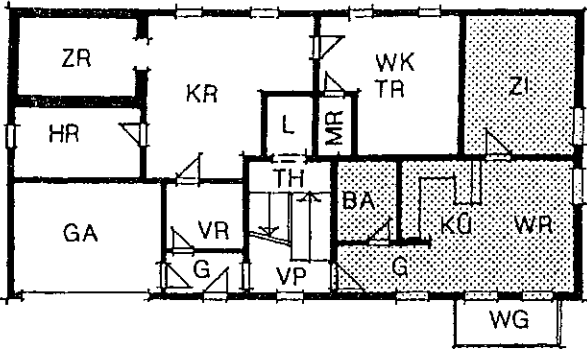


OK. FERTIG BODEN
DACHGESCHOSS



Die gerasterten Bruttogeschossflächen werden angerechnet

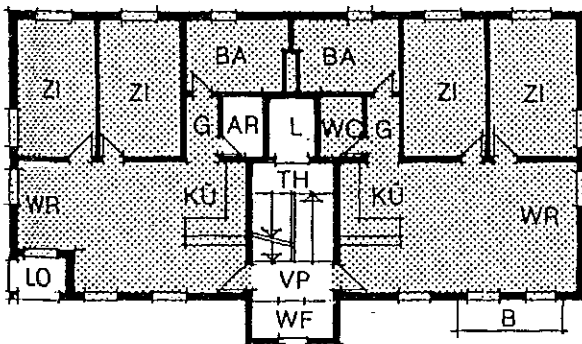
UNTERGESCHOSS



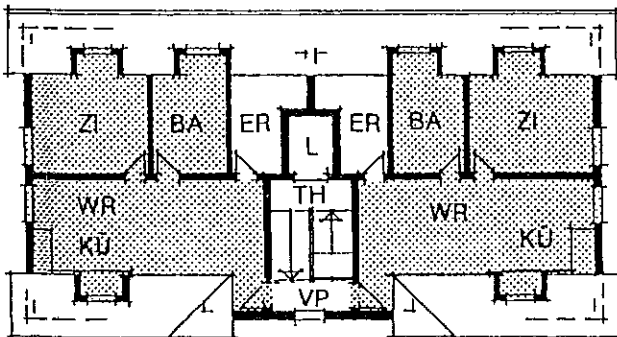
LEGENDE:

- AR = Abstellraum
- B = Balkon
- BA = Bad
- ER = Estrichraum
- G = Gang
- GA = Garage
- HR = Heizungsraum
- KÜ = Küche
- KR = Kellerraum
- L = Lift
- LO = Loggia
- MR = Maschinenraum Lift
- TH = Treppenhaus
- TR = Trockenraum
- VP = Vorplatz
- VR = Veloraum
- WF = Windfang
- WG = Wintergarten bis max. 15% der BGF
- WK = Waschküche
- WR = Wohnraum
- ZI = Zimmer
- ZR = Zivilschutzraum

VOLLGESCHOSS



DACHGESCHOSS



2.30m RAUMHÖHE

2.30m RAUMHÖHE